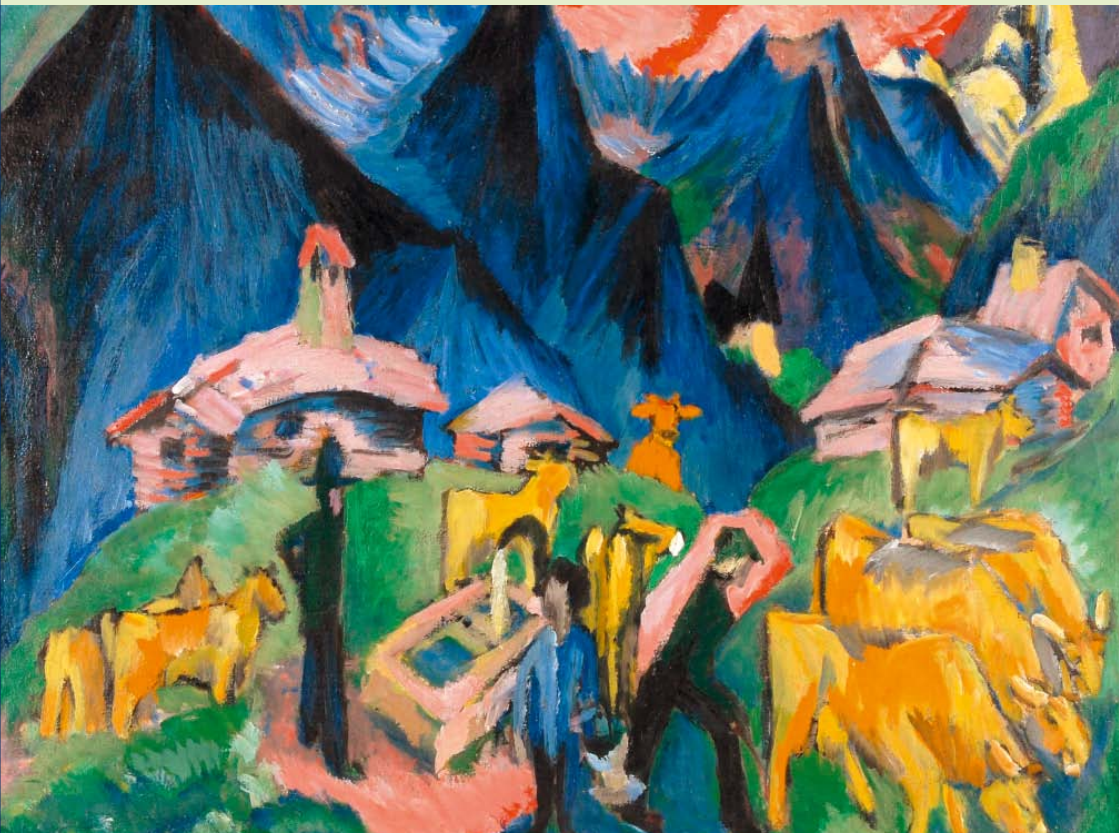




# 44th International Diagnostic Course Davos Excellence in Teaching



## **Diseases of the Brain, Head and Neck, Spine**

**March 25–30, 2012  
Davos, Switzerland**

### **Course on Diagnostic Imaging and Interventional Techniques**

Nuclear Medicine Satellite Course “Diamond”: March 24–25, 2012  
Pediatric Radiology Satellite Course “Kangaroo”: March 24–25, 2012  
Breast Imaging Satellite Course: March 24–25, 2012

Visit our stand at the IDKD in Davos,  
March 25 – 30, 2012

**frohberg.de**  
medien in der medizin



**Come and see**  
all that we have to offer.

**www.frohberg.de**



The International  
Diagnostic Course  
in Davos, IDKD,  
is an organ-based  
annual postgraduate  
course with a yearly  
changing topic.

Front cover: Ernst Ludwig Kirchner,  
"Life in the Alps", 1918, Oil on canvas, Kirchner  
Museum Davos, [www.kirchnermuseum.ch](http://www.kirchnermuseum.ch)

## Table of Contents

<b>General Concept</b>	2
<b>Organisation</b>	4
<b>Faculty Addresses</b>	5
<b>Scientific Program IDKD Course</b>	
- Lectures	10
- Workshops	12
<b>Program Overview</b>	14
<b>Scientific Program Satellite Courses</b>	
- Satellite Course "Diamond"	16
- Satellite Course "Kangaroo"	17
- Breast Imaging Course	17
<b>Registration Fees</b>	18
<b>Payment – Cancellation</b>	19
<b>CME Accreditation</b>	20
<b>General Information</b>	22
<b>Travel Arrangements</b>	23
<b>Social Program</b>	24
<b>Local Information Davos</b>	25
<b>Acknowledgements</b>	26
<b>Future IDKD Courses</b>	26

## General Concept

### Lectures on “Hot Topics” and Diagnostic Dilemmas

An Annual Oration is presented on Sunday. High-light and Special lectures presented daily by senior experts on “hot topics”, new developments or political issues in radiology and associated sciences including interventional techniques will complete the scientific program.

### Workshops

The participants will attend 20 of 21 different workshops covering the medical imaging approach to the diagnosis of the diseases of the Brain, Head and Neck, Spine. The instruction is in groups of approximately 50–60 participants. During workshops, participants first get a brief introduction to the subject and then study case material prepared by the instructors.

For the first time, participants may bring their own laptop (PC or Mac) for case viewing and will get the relevant case files on a USB-stick. For participants not bringing their own laptop classrooms will be equipped with a sufficient number of computers for individual viewing of the cases in small groups of 3 participants. The case viewing is supported by a special software, uniquely developed for IDKD and drawing from the extensive expertise with electronic teaching.

Finally, the instructors guide through the cases, discuss different diagnoses, present additional material and ask pertinent questions to the participants.

### Film Reading Panel

A diagnostic competition open to all participants and teachers, based on selected cases with answers. Quiz answers need to be handed in at the Quiz Corner by **Wednesday noon**.

Prizes will be awarded to the participants with the best answers. We believe, that answering the quiz is an individual accomplishment and reserve to exclude very similar answers from the competition.

### Course Syllabus

The Syllabus containing the condensed version of the presented workshops is included in the registration fee.

### IDKD online cases

IDKD offers access to two well-documented cases per teacher in the IDKD online database. Each participant receives a unique login (user/password) to access the database.

### IDKD on the Internet

Information about IDKD activities is constantly updated. Please visit our website at [www.idkd.org](http://www.idkd.org).

### Exhibition

Booths of selected imaging industries and one bookseller.

### Course and Teacher Evaluation

IDKD has two different types of course evaluation. Please help us test the novel USB-stick-based evaluation for teachers. There will also be a paper-based evaluation form for workshops, lectures and organisational aspects of IDKD. You will find this form in the congress bag. We kindly ask you to complete it and return it at the end of the meeting.

## Satellite Courses

### Nuclear Medicine Satellite Course “Diamond”

8 workshops on Nuclear Medicine.

This event is under the auspices of the EANM.



### Pediatric Radiology Satellite Course “Kangaroo”

4 workshops on specific aspects of Pediatric Imaging.

### Breast Imaging Satellite Course

4 workshops on specific aspects of Breast Imaging.



**CME Credits:**  
see also page 20

**IDKD Course:**  
EACCME:  
35 hours of European external CME credit  
Swiss Society of Radiology:  
39 category 1 points  
For German participants: Academy for  
Continuing Medical Education in Radiology:  
35 CME-points, category 1

**Nuclear Medicine Course “Diamond”:**  
EACCME:  
9 hours of European external CME credits  
Swiss Society of Radiology:  
10 category 1 points  
Swiss Society of Nuclear Medicine:  
12 category 1 points

**Pediatric Radiology Course “Kangaroo”:**  
EACCME:  
4 hours of European external CME credits  
Swiss Society of Radiology:  
5 category 1 points  
Swiss Society of Pediatric Radiology:  
5 CME 1 points

**Breast Imaging Course:**  
EACCME:  
4 hours of European external CME credits  
Swiss Society of Radiology:  
5 category 1 points

### International Diagnostic Course Davos

#### Course Directors

Juerg Hodler, Zurich

Gustav K. von Schulthess, Zurich

Christoph L. Zollikofer, Kilchberg (Zurich)

#### International Advisor

Pierre Schnyder, Lausanne

#### Satellite Course Advisors

Thierry A. G. M. Huisman, Baltimore, MD, US  
(Pediatric Radiology)

Rahel Kubik-Huch, Baden, Switzerland  
(Breast Imaging)

Gustav K. von Schulthess, Zurich, Switzerland  
(Nuclear Medicine)

#### American Advisors

Edmond A. Knopp, New York, NY, US

Walter Kucharczyk, Toronto, ON, Canada

#### Online Case Editor

Robert P. Götti, Zurich

#### Course Management

MCI Schweiz AG, Zurich-Glattbrugg

Maria Tsiplakova, Project Manager



### Foundation for the Advancement of Education in Medical Radiology Chairman

Dr. iur. Adolf E. Kammerer, Zurich

#### Members

Thomas Kehl, Davos-Clavadel

Brigit Läubli, Zurich

Walter Weder, Zurich

Christoph L. Zollikofer, Kilchberg (Zurich)

#### A

##### Maria Argyropoulou, MD

University of Ioannina

Medical Department

GR-45110 Ioannina

margyrop@cc.uoi.gr

#### B

##### Linda Bagley, MD

University of Pennsylvania Medical Center

Department of Radiology/Neuroradiology

US-Philadelphia, PA 19104

linda.bagley@uphs.upenn.edu

##### William S. Ball, MD

Cincinnati Children's Hospital Medical Center

US-Cincinnati, OH 45229-3039

william.ball@cchmc.org

##### Frederik Barkhof, MD

VU Medical Center

Image Analysis

NL-007 MB Amsterdam

f.barkhof@vumc.nl

##### Alain Bonafé, MD

Hôpital Gui de Chauliac

Département de Neuroradiologie

FR-34295 Montpellier

a-bonafe@chu-montpellier.fr

##### Michael Brant-Zawadzki, MD

Hoag Memorial Hospital Presbyterian

US-Newport Beach, CA 92663

mbrant@hoaghospital.org

##### Patrick A. Brouwer, MD

Leiden University Medical Center

Department of Radiology

NL-2300 RC Leiden

p.a.brouwer@lumc.nl

##### Alfred Buck, MD

University Hospital Zurich

Department of Nuclear Medicine

CH-8091 Zürich

fred.buck@usz.ch

##### James Byrne, MD

John Radcliffe Hospital,

University of Oxford

Department of Neuroradiology

UK-OX3 9DU Oxford

james.byrne@nds.ox.ac.uk

#### C

##### Jan W. Casselman, MD

AZ St-Jan Brugge AV

Department of Radiology

BE-8000 Brugge

jan.casselmann@azbrugge.be

##### Hugh D. Curtin, MD

Massachusetts Eye and Ear Infirmary

Department of Radiology

US-Boston, MA 02114

hugh\_curtin@meei.harvard.edu

## Faculty Addresses

### E

#### **Marco Essig, MD**

Deutsches Krebsforschungszentrum  
Department of Radiology  
DE-69120 Heidelberg  
m.essig@dkfz.de

### F

#### **Ernst Fehr, Professor of Economics**

University of Zurich  
Department of Economics  
CH-8006 Zürich  
ernst.fehr@econ.uzh.ch

#### **Jens Fiehler, MD**

University Medical Center Hamburg-Eppendorf  
Department of Diagnostics and Interventional  
Neuroradiology  
DE-20246 Hamburg  
fiehler@uke.de

#### **Adam Flanders, MD**

Thomas Jefferson University Hospital  
Neuroradiology  
US-Philadelphia, PA 19107-5244  
adam.flanders@jefferson.edu

### G

#### **Luca Giovanella, MD**

Oncology Institute of Southern Switzerland IOSI  
Department of Laboratory Medicine EOC  
Nuclear Medicine and PET/CT Centre  
CH-6500 Bellinzona  
luca.giovanella@eoc.ch

### H

#### **John R. Hesselink, MD**

UCSD Medical Center  
Department of Radiology and Neurosciences  
US-San Diego, CA 92103-8756  
jhesselink@ucsd.edu

#### **Thierry A. G. M. Huisman, MD**

Johns Hopkins Hospital  
US-Baltimore, MD 21287  
thuisma1@jhmi.edu

### J

#### **Mary E. Jensen, MD**

University of Virginia Health System  
Department of Radiology  
US-Charlottesville, VA 22908  
mej4u@virginia.edu

### K

#### **Karen Kinkel, MD**

Clinique des Grangettes  
7, ch. des Grangettes  
CH-1224 Chêne-Bougeries  
Karen.Kinkel@grangettes.ch

#### **Edmond A. Knopp, MD**

NYU Medical Center  
Neuroradiology  
US-New York, NY 10016  
edmond.knopp@nyumc.org

#### **Kelly K. Koeller, MD**

Mayo Clinic  
Department of Radiology  
US-Rochester, MN 55905  
Koeller.Kelly@mayo.edu

#### **Timo Krings, MD**

Toronto Western Hospital  
Division of Neuroradiology  
CA-Toronto, ON M5T 2S8  
timo.krings@uhn.on.ca

#### **Walter Kucharczyk, MD**

University of Toronto  
Department of Medical Imaging  
CA-Toronto, ON M5S 1A8  
w.kucharczyk@utoronto.ca

### L

#### **Ian Law, MD**

The Copenhagen University Hospital  
Department of Clinical Physiology,  
Nuclear Medicine and PET  
DK-2100 Copenhagen  
ilaw@pet.rh.dk

#### **Laurie A. Loevner, MD**

Hospital of University of Pennsylvania  
Radiology/Neuroradiology  
US-Philadelphia, PA 19104  
loevner@oasis.rad.upenn.edu

### M

#### **Martin G. Mack, MD**

Universitätsklinikum Frankfurt  
Institut für Diagnostische und  
Interventionelle Radiologie  
DE-60590 Frankfurt  
martin.g.mack@googlemail.com

#### **Pia Maly Sundgren, MD**

Lund University  
Center for Medical Imaging and Physiology  
Diagnostic Radiology, Clinical Sciences  
Skåne University Hospital  
SE-221 85 Lund  
pia.sundgren@med.lu.se

#### **David J. Mikulis, MD**

The Toronto Western Hospital  
Medical Imaging Research  
CA-Toronto, ON M5T 2S8  
mikulis@uhnres.utoronto.ca

#### **Michael T. Modic, MD**

Cleveland Clinic Lerner College of Medicine  
Division of Radiology  
US-Cleveland, OH 44195  
modicm1@ccf.org

#### **Walter Montanera, MD**

St. Michael's Hospital  
Department of Medical Imaging  
CA-Toronto, ON M5B 1W8  
montaneraw@smh.toronto.on.ca

#### **Markus Müller-Schimpfle, MD**

Radiologisches Zentralinstitut  
Städt. Kliniken Frankfurt/M-Höchst  
DE-65929 Frankfurt/Main  
mms@skfh.de

#### **Alexander Munding, MD**

Marienhospital Osnabrück  
Klinik für Radiologie  
DE-49074 Osnabrück  
alexander.munding@mho.de

### N

#### **Roger M. Nitsch, MD**

University of Zurich  
Division of Psychiatry Research  
CH-8008 Zurich  
nitsch@bli.uzh.ch

### P

#### **Paul M. Parizel, MD**

University Hospital Antwerp  
Department of Radiology  
BE-2650 Antwerp  
paul.parizel@uza.be

## Faculty Addresses

### **Christian Pfirrmann, MD**

Uniklinik Balgrist  
Radiology Department  
CH-8008 Zürich  
christian.pfirrmann@balgrist.ch

### **C. Douglas Phillips, MD**

Weill Medical College of Cornell University  
Department of Radiology  
Division of Neuroradiology  
US-New York, NY 10065  
dphillips@med.cornell.edu

## R

### **Jeffrey S. Ross, MD**

Barrow Neurological Institute  
Neuroradiology  
US-Paradise Valley, AZ 85253  
jstuartr@aol.com

### **Andrea Rossi, MD**

G. Gaslini Children's Hospital  
Neuroradiology Department  
IT-16147 Genoa  
andrearossi@ospedale-gaslini.ge.it

### **Howard A. Rowley, MD**

University of Wisconsin  
Neuroradiology  
US-Madison, WI 53792  
HRowley@UWHealth.org

## S

### **Osama Sabri, MD**

Universitätsklinikum Leipzig  
Klinik und Poliklinik für Nuklearmedizin  
DE-04103 Leipzig  
osama.sabri@medizin.uni-leipzig.de

### **Daniel T. Schmid, MD**

Universitätsspital Zürich  
Nuklearmedizin  
CH-8006 Zürich  
daniel.schmid@usz.ch

### **Bernhard Schuknecht, MD**

MRI am Bahnhofplatz  
CH-8001 Zürich  
image-solution@ggaweb.ch

### **James G. Smirniotopoulos, MD**

Uniformed Services University  
Center for Neuroscience and  
Regenerative Medicine  
US-Bethesda, MD 20814  
james-smirnio@usuhs.edu

### **Wendy R. K. Smoker, MD**

University of Iowa  
Department of Radiology  
US-Iowa City, IO 52242-1009  
wendy-smoker@uiowa.edu

## T

### **Marcos Tatagiba, MD**

Eberhard Karls University Tuebingen  
Department of Neurosurgery  
DE-72076 Tübingen  
marcos.tatagiba@med.uni-tuebingen.de

### **Harriet Thoeny, MD**

Universitätsklinik Inselspital Bern  
Departement für Diagnostische,  
Interventionelle und Pädiatrische Radiologie  
CH-3010 Bern  
harriet.thoeny@insel.ch

### **Majda Thurnher, MD**

Medical University Vienna  
Department of Radiology  
AT-1090 Vienna  
majda.thurnher@meduniwien.ac.at

### **Charles Truwit, MD**

Hennepin County Medical Center  
Department of Radiology  
US-Minneapolis, MN 55415  
truwit@umn.edu

## V

### **Mark A. Van Buchem, MD**

Leiden University Medical Center  
Neuroradiology  
NL-2300 RC Leiden  
m.a.van\_buchem@lumc.nl

### **Antonios Valavanis, MD**

Universitätsspital  
Institut für Neuroradiologie  
CH-8091 Zürich  
neuroradiologie@usz.ch

### **Koen Van Laere, MD**

University Hospital Gasthuisberg  
Division of Nuclear Medicine  
BE-3000 Leuven  
koen.vanlaere@uzleuven.be

### **Francis Veillon, MD**

Hôpital de Hautepierre  
Service de Radiologie I  
FR-67098 Strasbourg  
Francis.Veillon@chru-strasbourg.fr

## W

### **Christian Weismann, MD**

University Institute of Radiology  
Diagnostic and Interventional  
Breast Department  
AT-5020 Salzburg  
christian.weismann@inode.at

### **Michael Weller, MD**

University Hospital Zurich  
Department of Neurology  
CH-8091 Zurich  
michael.weller@usz.ch

### **Martin Wiesmann, MD**

University of Aachen RTWH  
Klinik für Diagnostische und  
Interventionelle Neuroradiologie  
DE-52074 Aachen  
mwiesmann@ukaachen.de

### **Robert Willinsky, MD**

The Toronto Western Hospital  
University Health Network  
Medical Imaging  
CA-Toronto, ON M5T 2S8  
robert.willinsky@uhn.on.ca

## Y

### **Tina Young Poussaint, MD**

Harvard Medical School  
Children's Hospital of Boston  
PBTC Neuroimaging Center  
US-Boston, MA 02115  
TinaYoung.Poussaint@childrens.harvard.edu

### **David M. Yousem, MD**

Johns Hopkins Hospital  
Department of Neuroradiology  
US-Baltimore, MD 21287-2182  
dyousem1@jhu.edu

## Scientific Program IDKD Course

### Lectures

#### Annual Oration

**Sunday, March 25, 2012**

17.15–18.00

#### **Imaging of Economic Decision Making Processes**

Ernst Fehr, CH

### Lectures

**Sunday, March 25, 2012**

10.00–10.10

Opening Address

10.10–12.15

#### **1. Alzheimer Disease: Diagnosis, Therapy and Therapy Monitoring. Where are we going?**

10.25–10.50

#### **1a. Beta Amyloid Lowering Therapies of Alzheimer Disease (AD)**

Roger M. Nitsch, CH

10.50–11.15

#### **1b. MR Imaging of AD and MR Differential Diagnosis**

Frederik Barkhof, NL

11.15–11.40

#### **1c. Diagnosis and Therapy Monitoring of AD with Plaque Imaging PET**

Osama Sabri, DE

11.40–12.05

#### **1d. Current SPECT- and PET Imaging of AD and Differential Diagnosis**

Ian Law, DK

12.05–12.15

#### **1e. Outlook**

Roger M. Nitsch, CH

#### Instruction for Course Informatics

13.20–13.40

Juerg Hodler, CH

**Monday, March 26, 2012**

11.10–12.00

#### **2. Intraoperative Imaging in Neurosurgery: Tool or Toy?**

Marcos Tatagiba, DE

**Tuesday, March 27, 2012**

11.10–12.00

#### **3. What Do Clinical Neurooncologists Expect from Neuroimaging: the RANO criteria and beyond?**

Michael Weller, CH

**Wednesday, March 28, 2012**

11.10–12.00

#### **4. Transarterial Devascularization of Intracranial Tumors**

Antonios Valavanis, CH

**Thursday, March 29, 2012**

11.10–12.00

#### **5. Brain AVMs and Dural AVFs: Imaging Clues to Determine If, Why, When and How to Treat**

Timo Krings, CA

**Friday, March 30, 2012**

11.10–12.00

#### **6. Advanced Imaging of Brain Perfusion**

Howard A. Rowley, US

### Special Lectures

**Monday, March 26, 2012**

14.30–15.30

#### **7 Tesla MRI – The Next Clinical Frontier**

Edmond A. Knopp, US

**Tuesday, March 27, 2012**

14.30–15.30

#### **Spin Gymnastics: The Basic Physics of MRI**

Walter Kucharczyk, CA

**Wednesday, March 28, 2012**

15.00–16.00

#### **PET/CT and PET/MR in Head and Neck Imaging**

Daniel T. Schmid, CH

**Thursday, March 29, 2012**

14.30–15.30

#### **What the Clinician Wants to Know about Head and Neck Radiology**

Harriet Thoeny, CH

### Film Reading Panel

**Wednesday, March 28, 2012**

16.30–18.30

#### **Co-Moderators**

Edmond A. Knopp, US

Walter Kucharczyk, CA

#### **Panelists**

Paul M. Parizel, BE

Howard A. Rowley, US

Majda Thurnher, AT

Charles Truwit, US

### Workshops

- 1. Cerebral Neoplasms**  
Edmond A. Knopp, US  
Walter Montanera, CA
- 2. Mass Lesions of the Brain:  
A Differential Diagnostic Approach**  
Michael Brant-Zawadzki, US  
James G. Smirniotopoulos, US
- 3. Evaluation of Cerebral Vessels**  
Mary E. Jensen, US  
Robert Willinsky, CA
- 4. Brain Ischemia**  
Jens Fiehler, DE  
Howard A. Rowley, US
- 5. Hemorrhagic Vascular Pathology**  
James Byrne, UK  
Martin Wiesmann, DE
- 6. Demyelinating Diseases**  
Frederik Barkhof, NL  
Kelly K. Koeller, US
- 7. Degenerative and Metabolic Diseases  
of the Brain**  
Marco Essig, DE  
Mark A. van Buchem, NL
- 8. Traumatic Neuroemergency**  
Paul M. Parizel, BE  
C. Douglas Phillips, US
- 9. Non-traumatic Neuroemergency**  
Patrick A. Brouwer, NL  
John R. Hesselink, US
- 10. Imaging the Patient with Seizures**  
Linda Bagley, US  
Timo Krings, CA
- 11. Imaging of Cerebral Infections**  
Alain Bonafé, FR  
David J. Mikulis, CA
- 12a. Diseases of the Sella and  
Parasellar Region**  
Walter Kucharczyk, CA
- 12b. Diseases of the Sella**  
Charles Truwit, US
- 13. Diseases of the Temporal Bone**  
Jan W. Casselman, BE  
Francis Veillon, FR
- 14. Imaging of the Pharynx  
and Oral Cavity**  
Bernhard Schuknecht, CH  
Wendy R. K. Smoker, US
- 15. Diseases of the Larynx**  
Hugh D. Curtin, US  
Martin G. Mack, DE
- 16a. Extramucosal Spaces of the  
Head and Neck**  
Laurie Loevner, US
- 16b. Nose, Paranasal Sinuses  
and Adjacent Spaces**  
David M. Yousem, US
- 17. Degenerative Diseases of the Spine**  
Michael T. Modic, US  
Christian Pfirrmann, CH
- 18. Spinal Trauma and Injuries**  
Adam Flanders, US  
Pia Maly Sundgren, SE
- 19. Spinal Inflammatory and  
Demyelinating Diseases**  
Jeffrey S. Ross, US  
Majda Thurnher, AT
- 20. Congenital and Acquired Abnormalities  
of the Pediatric Brain**  
William S. Ball, US  
Thierry A. G. M. Huisman, US
- 21. Imaging of Pediatric Brain and  
Spinal Cord Tumors**  
Andrea Rossi, IT  
Tina Young Poussaint, US



## Program Overview

For topics of Workshops and Lectures please see pages 10–13.

### Saturday

March 24, 2012

#### Nuclear Medicine

08.00–09.00 Registration

09.00–09.15 Course Introduction

09.30–10.45 Workshops

10.45–11.00 Intermission

11.00–12.15 Workshops

12.15–13.00 Intermission

13.00–14.15 Workshops

#### Pediatric Radiology / Breast Imaging

08.00–14.00 Registration

14.00–14.15 Course Introduction

#### Nuclear Medicine / Pediatric Radiology / Breast Imaging

14.30–15.45 Workshops

15.45–16.15 Intermission

16.15–17.30 Workshops

17.45–19.00 Workshops

**Exhibition open at 08.00–12.00 and 15.45–19.00 (closed on Wednesday afternoon and Friday afternoon).**

### Sunday

March 25, 2012

#### Nuclear Medicine

07.10–08.25 Workshops

08.25–08.35 Intermission

08.35–09.50 Workshops

#### Pediatric Radiology

08.30–09.45 Workshops

#### Breast Imaging

08.30–09.45 Workshops

#### IDKD

07.00–18.00 Registration

10.00–10.10 Opening Address

10.10–12.15 Highlight Lectures

13.20–13.40 Instruction for Course Informatics

14.00–15.15 Workshops

15.15–15.45 Intermission

15.45–17.00 Workshops

17.15–18.00 Annual Oration

18.00–19.30 Welcome Reception

### Monday

March 26, 2012

08.00–09.15 Workshops

09.15–09.45 Intermission

09.45–11.00 Workshops

11.15–12.00 Highlight Lecture

12.00–14.30 Intermission / Self Study\*

14.30–15.30 Special Lecture

16.00–17.15 Workshops

17.15–17.45 Intermission

17.45–19.00 Workshops

### Tuesday

March 27, 2012

08.00–09.15 Workshops

09.15–09.45 Intermission

09.45–11.00 Workshops

11.15–12.00 Highlight Lecture

12.00–14.30 Intermission / Self Study\*

14.30–15.30 Special Lecture

16.00–17.15 Workshops

17.15–17.45 Intermission

17.45–19.00 Workshops

### Wednesday

March 28, 2012

08.00–09.15 Workshops

09.15–09.45 Intermission

09.45–11.00 Workshops

11.15–12.00 Highlight Lecture

12.00–15.00 Intermission / Self Study\*

15.00–16.00 Special Lecture

16.30–18.30 Film Reading Panel Quiz

17.15–17.45 Intermission

17.45–19.00 Workshops

### Thursday

March 29, 2012

08.00–09.15 Workshops

09.15–09.45 Intermission

09.45–11.00 Workshops

11.15–12.00 Highlight Lecture

12.00–14.30 Intermission / Self Study\*

14.30–15.30 Special Lecture

16.00–17.15 Workshops

17.15–17.45 Intermission

17.45–19.00 Workshops

### Friday

March 30, 2012

08.00–09.15 Workshops

09.15–09.45 Intermission

09.45–11.00 Workshops

11.15–12.00 Highlight Lecture

12.00–12.45 Intermission

12.45–14.00 Workshops

14.15–15.30 Workshops

**\* Self Study room open on Monday to Thursday at 13.00–16.00.**

## Scientific Program Satellite Courses

### Nuclear Medicine Satellite Course “Diamond”

#### Course Objectives

1. Teach the participants effective approaches in analysing diagnostic imaging challenges in patients with diseases of the Brain, Head and Neck, Spine using Nuclear Medicine imaging techniques
2. Allow participants in guided self study to recognize key imaging features of various diseases
3. Teach participants in which setting which imaging examination is most effective
4. Permit participants to interact with top international experts in the fields Nuclear Medicine imaging of Brain, Head and Neck, Spine diseases

#### Target audience

- Nuclear Physicians / Radiologists
- Nuclear Medicine / Radiology residents and fellows
- Interested clinicians, particularly neurologists

#### Workshops Brain

- 1. Neurodegenerative Disease: Correlative Imaging**  
Frederik Barkhof, NL
- 2. PET Imaging of Dementia**  
Osama Sabri, DE
- 3. PET- and SPECT Imaging in Epilepsy**  
Koen van Laere, NL
- 4. Quantification of Neuro-PET, where and when to use it**  
Alfred Buck, CH

#### 5. NM Imaging of Brain Tumors

Ian Law, DK

#### 6. Nuclear Imaging of Neurovascular Disease

Ian Law, DK

#### Workshops Neck

##### 1. Integrated PET-CT and PET-MR of SSC of the Neck

Laurie Loevner, US

##### 2. Radioiodine Therapy: Current Imaging Concepts

Luca Giovannella, CH

### Pediatric Radiology Satellite Course “Kangaroo”

#### Course Objectives

1. Teach the participants effective approaches in analysing diagnostic imaging challenges in pediatric patients with diseases of the Brain, Head and Neck, Spine
2. Allow participants in guided self study to recognize key imaging features of various diseases
3. Teach participants in which setting which imaging examination is most effective
4. Permit participants to interact with top international experts in the fields of pediatric Brain, Head and Neck, Spine imaging

#### Target audience

- Radiologists
- Radiology residents and fellows
- Interested clinicians, particularly pediatric neurologists
- Radiology technicians with advanced competences/interests

##### 1. Accidental and Non-Accidental Injury of the Pediatric Brain and Spine

Thierry A. G. M. Huisman, US

##### 2. Imaging of Phakomatoses in Children

Tina Young Poussaint, US

##### 3. Acquired Infectious and Auto-Immune Diseases of the Pediatric CNS

Andrea Rossi, IT

##### 4. Hemorrhage, Stroke and Ischemia of the Neonatal Brain

Maria Argyropoulou, GR

### Breast Imaging Satellite Course

#### Course Objectives

1. Teach the participants effective approaches in analysing diagnostic imaging challenges in breast disease
2. Allow participants in guided self study to recognize key imaging features of various breast diseases
3. Teach participants in which setting which imaging examination is most effective
4. Permit participants to interact with top international experts in the field of breast imaging

#### Target audience

- Radiologists
- Radiology residents and fellows
- Interested clinicians
- Radiology technicians with advanced competences/interests

##### 1. MRI of the Breast: Technique, Indications and BI-RADS Classification

Karen Kinkel, CH

##### 2. Mammography: Evaluation of Microcalcifications

Markus Müller-Schimpfle, DE

##### 3. Ultrasound of the Breast (including Interventions): An Update

Alexander Munding, DE

##### 4. Mammography: Diagnosis of Asymmetries, Masses and Architectural Distortions

Christian Weismann, AT

## Registration Fees

### All prices in CHF

Early fee: until January 31, 2012  
 Standard fee: until March 1, 2012  
 Late fee: from March 2, 2012

For the first time in Davos, participants may bring their own laptops (PC or Mac) to view cases. The participants wishing to bring their own laptop need to declare this during the registration process and **will receive a rebate.**

“Bring your own laptop” rebates:  
 - IDKD Course or IDKD and Satellite: CHF 75.–  
 - Satellite Course: only CHF 30.–  
 For participants without laptops, the IDKD will supply laptops as during the past IDKD courses.

	Early	Standard	Late
<b>IDKD Course only</b>	<b>1.205.–</b>	<b>1.470.–</b>	<b>1.670.–</b>
Fee for Residents*	920.–	1.170.–	1.370.–
<b>Nuclear Medicine Satellite Course “Diamond” only</b>	<b>335.–</b>	<b>460.–</b>	<b>510.–</b>
Fee for Residents*	280.–	390.–	440.–
<b>IDKD and “Diamond”</b>	<b>1.545.–</b>	<b>1.860.–</b>	<b>2.110.–</b>
Fee for Residents*	1.200.–	1.500.–	1.750.–
<b>Pediatric Radiology Satellite Course “Kangaroo” only</b>	<b>225.–</b>	<b>330.–</b>	<b>360.–</b>
Fee for Residents*	190.–	280.–	310.–
<b>IDKD and “Kangaroo”</b>	<b>1.455.–</b>	<b>1.750.–</b>	<b>1.980.–</b>
Fee for Residents*	1.130.–	1.410.–	1.640.–
<b>Breast Imaging Satellite Course only</b>	<b>225.–</b>	<b>330.–</b>	<b>360.–</b>
Fee for Residents*	190.–	280.–	310.–
<b>IDKD and Breast Imaging</b>	<b>1.455.–</b>	<b>1.750.–</b>	<b>1.980.–</b>
Fee for Residents*	1.130.–	1.410.–	1.640.–

\* A certificate signed by Head of Department must be sent to the IDKD Administrative Office upon registration (fax: +41 44 809 42 01 or scanned to: [info@idkd.org](mailto:info@idkd.org)).

The participants of the IDKD Course and the Satellite Courses receive a Syllabus and access to the IDKD online cases with a unique login (user/password), as well as a certificate of attendance.



### Payment

Bank: UBS AG, CH-8032 Zurich  
 Account nr: 251-964156.01A  
 Clearing: 251  
 BIC/Swift Code: UBSWCHZH80A  
 IBAN: CH44 0025 1251 9641 5601 A  
 References: SFAMR  
 Credit Cards: VISA or Eurocard/Mastercard

## Payment – Cancellation

### Cancellation of Registration

Written notification is required for all cancellations and changes. Refunds are made as follows:  
 80% before January 31, 2012  
 50% before March 1, 2012  
 No refunds thereafter. Same cancellation policy applies to the Satellite Courses.

### Cancellation of the IDKD Course

Course fees will be reimbursed in case of cancellation of the IDKD Course due to reasons other than war, warlike events, acts of terrorism, acts of God or epidemics, in which case only a proportionate part would be refundable.

### Confirmation of Registration and Course Badge

After successful registration, your personal course badge and further information will be sent in early March 2012 to your address indicated on the registration form. The badge is personal and is your admission card to the course. **Do not forget it! Do not lose it!** In case of loss, a replacement badge will be provided against an administrative charge of CHF 50.–.

### Disclaimer

The IDKD and the Course Management cannot accept liability for the acts of any suppliers to this meeting, nor accidents or injuries that may occur, nor the safety of attendees while in transit to or from this event. All participants are strongly advised to carry proper travel and health insurance, as the IDKD cannot accept liability for any accidents or injuries that may occur. Participants will be responsible for the security of their laptops at all times.

### Teaching Hours

The Course comprises twenty 75-minute workshops and approximately 11 hours of plenary lectures, i.e. a total of 36 hours of teaching.

In addition:

Nuclear Medicine:	9 hours
Pediatric Radiology:	5 hours
Breast Imaging:	5 hours

Teaching hours can be directly claimed as credits in many countries.

In order to secure the correct attendance record for CME purposes, IDKD will register your attendance at every workshop, using individual self-adhesive bar-code stickers. Those stickers need to be used at the exit from every workshop that you attended.

### The 44th International Diagnostic Course Davos

is accredited by the European Accreditation Council for Continuing Medical Education (EACCME) to provide the following CME activity for medical specialists. The EACCME is an institution of the European Union of Medical Specialists (UEMS), [www.uems.net](http://www.uems.net).



The 44th International Diagnostic Course Davos is designated for a maximum of 35 hours of European external CME credits. Each medical specialist should claim only those hours of credit that he/she actually spent in the educational activity. The EACCME credit system is based on 1 ECMEC per hour with a maximum of 3 ECMECs for half a day and 6 ECMECs for a full-day event.

Through an agreement between the European Union of Medical Specialists and the American

Medical Association, physicians may convert EACCME credits to an equivalent number of AMA PRA Category 1 Credits™. Information on the process to convert EACCME credit to AMA credit can be found at [www.ama-assn.org/go/internationalcme](http://www.ama-assn.org/go/internationalcme).

Live educational activities, occurring outside of Canada, recognized by the UEMS-EACCME for ECMEC credits are deemed to be Accredited Group Learning Activities (Section 1) as defined by the Maintenance of Certification Program of The Royal College of Physicians and Surgeons of Canada.

The Swiss Society of Radiology designates the IDKD with 39 category 1 points. The Academy for Continuing Medical Education in Radiology designates the IDKD with 35 CME-points, category 1.



In cooperation with the Academy for Continuing Medical Education in Radiology.

### Nuclear Medicine Satellite Course "Diamond"

The IDKD Nuclear Medicine Satellite Course "Diamond" is accredited by the European Accreditation Council for Continuing Medical Education (EACCME) to provide the following CME activity for medical specialists. The EACCME is an institution of the European Union of Medical Specialists (UEMS), [www.uems.net](http://www.uems.net).

The IDKD Nuclear Medicine Satellite Course "Diamond" is designated for a maximum of 9 hours of European external CME credits. Each medical specialist should claim only those hours of credit that he/she actually spent in the educational activity.

Through an agreement between the European Union of Medical Specialists and the American Medical Association, physicians may convert EACCME credits to an equivalent number of AMA

PRA Category 1 Credits™. Information on the process to convert EACCME credit to AMA credit can be found at [www.ama-assn.org/go/internationalcme](http://www.ama-assn.org/go/internationalcme).

Live educational activities, occurring outside of Canada, recognized by the UEMS-EACCME for ECMEC credits are deemed to be Accredited Group Learning Activities (Section 1) as defined by the Maintenance of Certification Program of The Royal College of Physicians and Surgeons of Canada.

The Swiss Society of Radiology designates the course with 10 category 1 points. The Swiss Society of Nuclear Medicine designates the course with 12 category 1 points. This event is under the auspices of EANM.



### Pediatric Radiology Satellite Course "Kangaroo"

The IDKD Pediatric Radiology Satellite Course "Kangaroo" is accredited by the European Accreditation Council for Continuing Medical Education (EACCME) to provide the following CME activity for medical specialists. The EACCME is an institution of the European Union of Medical Specialists (UEMS), [www.uems.net](http://www.uems.net).

The IDKD Pediatric Radiology Satellite Course "Kangaroo" is designated for a maximum of 4 hours of European external CME credits. Each medical specialist should claim only those hours of credit that he/she actually spent in the educational activity.

Through an agreement between the European Union of Medical Specialists and the American Medical Association, physicians may convert EACCME credits to an equivalent number of AMA PRA Category 1 Credits™. Information on the process to convert EACCME credit to AMA credit can be found at [www.ama-assn.org/go/internationalcme](http://www.ama-assn.org/go/internationalcme).

Live educational activities, occurring outside of Canada, recognized by the UEMS-EACCME for

ECMEC credits are deemed to be Accredited Group Learning Activities (Section 1) as defined by the Maintenance of Certification Program of The Royal College of Physicians and Surgeons of Canada.

The Swiss Society of Radiology designates the course with 5 category 1 points. The Swiss Society of Pediatric Radiology designates the course with 5 category 1 points.

### Breast Imaging Satellite Course

The IDKD Breast Imaging Satellite Course is accredited by the European Accreditation Council for Continuing Medical Education (EACCME) to provide the following CME activity for medical specialists. The EACCME is an institution of the European Union of Medical Specialists (UEMS), [www.uems.net](http://www.uems.net).

The IDKD Breast Imaging Satellite Course is designated for a maximum of 4 hours of European external CME credits. Each medical specialist should claim only those hours of credit that he/she actually spent in the educational activity. Through an agreement between the European Union of Medical Specialists and the American Medical Association, physicians may convert EACCME credits to an equivalent number of AMA PRA Category 1 Credits™. Information on the process to convert EACCME credit to AMA credit can be found at [www.ama-assn.org/go/internationalcme](http://www.ama-assn.org/go/internationalcme).

Live educational activities, occurring outside of Canada, recognized by the UEMS-EACCME for ECMEC credits are deemed to be Accredited Group Learning Activities (Section 1) as defined by the Maintenance of Certification Program of The Royal College of Physicians and Surgeons of Canada.

The Swiss Society of Radiology designates the course with 5 category 1 points.

## General Information

### Addresses

#### Course Management

IDKD Office, MCI Schweiz AG  
Flughofstrasse 54  
CH-8152 Zurich-Glattbrugg  
Switzerland  
Phone: +41 44 809 42 80  
Fax: +41 44 809 42 01  
E-Mail: [info@idkd.org](mailto:info@idkd.org)  
Web: [www.idkd.org](http://www.idkd.org)

#### Venue and Local Course Office

Convention Center Davos  
Talstrasse  
CH-7270 Davos-Platz  
Switzerland  
Phone: +41 81 414 64 07/08  
Fax: +41 81 414 64 26

#### Opening Hours of the Convention Center

Saturday, March 24, 2012	08.00–19.15
Sunday, March 25, 2012	07.00–19.30

Monday through Friday always 30 minutes before session until 30 minutes after session – limited access to room for self study and special lectures on Monday through Thursday at 13.00–15.30.

#### Starting Times of the Courses

##### Nuclear Medicine:

Saturday, March 24, 2012	09.00
--------------------------	-------

##### Pediatric Radiology:

Saturday, March 24, 2012	14.00
--------------------------	-------

##### Breast Imaging:

Saturday, March 24, 2012	14.00
--------------------------	-------

##### IDKD Course

Sunday, March 25, 2012	10.00
------------------------	-------

### Language

English

#### Change of Program

Information and times mentioned in this document may be subject to change. Participants are requested to check the exact schedule for the following day every evening at the notice board. Please review updated information on [www.idkd.org](http://www.idkd.org).

#### Coffee Breaks

##### IDKD course:

Free coffee will be served Monday – Friday during the first morning intermission (09.15–09.45) and Monday–Thursday during the afternoon intermission (17.15–17.45). On Wednesday and Friday afternoon coffee will not be served.

##### Nuclear Medicine Course only:

Saturday, March 24, 2012	10.45–11.00
Sunday, March 25, 2012	08.25–08.35

##### All Satellite Courses:

Saturday, March 24, 2012	15.45–16.15
--------------------------	-------------

#### Packed lunches on Friday

Tickets for packed lunches will be available at the Registration desk on Sunday to Wednesday noon at CHF 15.– or EUR 13.–.

#### IDKD on the Internet

Information about IDKD activities is constantly updated. Please visit our website at [www.idkd.org](http://www.idkd.org).



Swiss International Air Lines is proud to be the Official Carrier for the 44th International Diagnostic Course Davos (IDKD) and is offering special Congress Fares to all participants. These Congress Fares offer reductions of up to 25% depending on the fare type, route and space availability. Congress Fares are valid on the entire SWISS route network for flights to Switzerland, including flights operated by partner airlines under an LX flight number. These fares are now bookable for the travel period 14 days prior to and 14 days after the event.

To take advantage of this offer, book easily and conveniently through SWISS.COM via the following link: [www.swiss.com/event](http://www.swiss.com/event). Please enter your email address and the following event code: **6445-9264-1136-2533**.

The special SWISS congress fare is marked with a "C". It may not necessarily be the lowest fare but it offers flexibility in the event of rebooking or cancellation.

SWISS looks forward to pampering you on board with typical Swiss hospitality.

## Travel Arrangements

### Ground Transportation

#### by train

Train connections every hour between 06.00 and 21.00 from Zurich main station and Zurich Airport to Davos-Dorf. Schedule: [www.rail.ch](http://www.rail.ch).

#### by car

147 km from Zurich  
235 km from Basel  
304 km from Munich  
538 km from Frankfurt am Main  
240 km from Milan



### Organisation

Yela von Schulthess  
Olga Zollikofer

### Welcome Reception

Sunday, March 25, 2012  
18.00–19.30  
Convention Center

All participants and their guests are cordially invited.

### IDKD Dinner

Thursday, March 29, 2012  
19.30–23.30  
Hotel Steigenberger Belvédère  
Price: CHF 80.– (all drinks included)

Limited number of participants.  
Online registration: [www.idkd.org](http://www.idkd.org)



Davos offers excellent facilities for a wide range of sports and relaxation. Excursions to the surrounding areas and nearby valleys are highly recommended. Davos Tourism provides information at [www.davos.ch](http://www.davos.ch) concerning all winter sports, horseback riding, rental of sport equipment, horse sleigh rides, kindergarten, baby-sitting, swimming, sauna, excursions and many others.

### Local Activities

Skiing in the region of Davos and Klosters is the main outdoor attraction. During the 44th IDKD, Davos Klosters Mountains offer IDKD participants the following passes available on presentation of the IDKD course badge. For further information, please visit [www.davosklosters.ch](http://www.davosklosters.ch).

#### High season (until March 25, 2012):

Regional Day Pass	CHF 62.10
Regional 6-Day	CHF 286.20

#### Low season (from March 26, 2012):

Parsenn Davos and Klosters and Jakobshorn skiing areas are open:	
Regional Day Pass incl. the above regions is available at	CHF 54.00
Regional 6-Day Pass is available at	CHF 250.20
Regional Afternoon Pass	CHF 43.20

Please note, that above mentioned fees are already reduced (10% from published fees).

### Tourist Office

Davos Destinations-Organisation  
Talstrasse 41  
CH-7270 Davos-Platz, Switzerland  
Phone: +41 81 415 21 21  
Fax: +41 81 415 21 00  
E-Mail: [info@davos.ch](mailto:info@davos.ch)  
Web: [www.davos.ch](http://www.davos.ch)

### Accommodation

Accommodation booking for the 44th IDKD Davos is handled by Davos Congress. Hotel reservations at specially negotiated rates must be placed online at [www.idkd.org](http://www.idkd.org), IDKD Davos 2012, Accommodation.

### Booking and Cancellation Policy

1. To guarantee your hotel booking we need your credit card number
2. Payment should be made directly at your hotel upon departure
3. In case of cancellations, we forward your credit card details to the hotel
4. Cancellations up to 21 days prior to planned arrival: free of charge
5. Cancellations between 20 and 7 days prior to planned arrival: 50% of the cancelled arrangement will be charged
6. Cancellations between 7 and 0 days prior to planned arrival: the hotel will charge the total amount of the booked arrangement
7. The cancelled amount can only be charged to the guest if the hotel cannot resell the cancelled room nights
8. No shows: In case of a no show (no check-in at the hotel without any cancellation) the hotel will charge the total amount of the booked arrangement to your credit card

### For more information, please contact

Davos Congress  
Phone: +41 81 415 21 63  
Fax: +41 81 415 21 69  
E-Mail: [congress@davos.ch](mailto:congress@davos.ch)

### Bank, Post Office

At the course registration desk, Swiss Francs, Euro, Eurocard/Mastercard and VISA are accepted. Foreign currencies may be changed at one of the local banks (Monday–Friday, 08.30–12.00 and 14.00–17.30). There is an ATM (Bankautomat) available 24 hours outside the North entrance of the Convention Center on Promenade Floor.

### Car Parking

Participants are advised to observe the official parking signs. Course management cannot accept responsibility for unauthorized parking. There are very limited meter parking facilities in front of the main entrance of the Congress Center at Talstrasse, therefore we suggest that you park your car at your hotel and use public busses free of charge. Your hotel guest card will entitle you to free bus transportation in Davos.

## Acknowledgements

The organisers are grateful to all companies and persons who helped realise and develop this course through their collaboration and contributions.

### Donations

Fujifilm (Switzerland) AG, Dielsdorf, CH  
Genzyme GmbH, Baar, CH  
Philips AG, Zurich, CH  
THP Medical Products Vertriebs GmbH, Vienna, AT

### Sponsorship and Advertisements

Advanced Accelerator Applications, Geneva, CH  
Bayer (Schweiz) AG, Zurich, CH  
froberg.de – medien in der medizin, Berlin, DE  
Guerbet AG, Zurich, CH  
Siemens Schweiz AG, Zurich, CH

### Technical Exhibits

Bayer (Schweiz) AG, Zurich, CH  
Bracco Suisse SA, Manno, CH  
Covidien, Zurich, CH  
froberg.de – medien in der medizin, Berlin, DE  
GE Healthcare, Glattbrugg/Zurich, CH  
Guerbet AG, Zurich, CH

## Future IDKD Courses

### 2012

2nd IDKD 2012 Hong Kong  
**Diseases of the Abdomen and Pelvis**  
June 16–19, 2012

### 5th IDKD 2012 Greece

**Diseases of the Heart and Chest**  
September 27–30, 2012  
Mykonos, Greece

### 2013

45th IDKD 2013 Davos  
**Musculoskeletal Diseases**  
April 2–7, 2013

### 3rd IDKD 2013 Hong Kong

**Diseases of the Heart and Chest**

### 2014

46th IDKD 2014 Davos  
**Diseases of the Abdomen and Pelvis**  
March 30–April 4, 2014

Visit the IDKD website at [www.idkd.org](http://www.idkd.org) for updated information.

# YOUR PHARMACEUTICAL PARTNER IN MOLECULAR NUCLEAR MEDICINE



Bridging science  
**WITH LIFE**



Advanced  
Accelerator  
Applications

BRIDGING  
SCIENCE  
WITH LIFE

[www.aadacap.com](http://www.aadacap.com)

**AAA** develops and commercializes innovative Diagnostic and Therapeutic applications and products. Its main research focus is on Molecular Imaging and Personalized Medicine for the diagnosis and treatment of diseases where there is a clear, unmet medical need



**5th IDKD Intensive Course in Greece**  
**Excellence in Teaching**



## **Diseases of the Heart and Chest**

**September 27–30, 2012**  
**Mykonos, Greece**

**An Interactive Course in Diagnostic Imaging**  
[www.idkd.org](http://www.idkd.org)



**2nd IDKD Intensive Course in Hong Kong**  
**Excellence in Teaching**



## **Diseases of the Abdomen and Pelvis**

**June 16–19, 2012**  
**Hong Kong**

In collaboration with the University of Hong Kong and  
the Hong Kong College of Radiologists

**An Interactive Course in Diagnostic Imaging**  
[www.idkd.org](http://www.idkd.org)



**SIEMENS**

Good health is beyond price. Which is exactly why it must remain affordable.

Switzerland is forging new paths with solutions for sustainable medical care.

[www.siemens.ch/healthcare](http://www.siemens.ch/healthcare)

Our society is ageing – we are living longer. Thus by the year 2030 the over 65's age group will have almost doubled. The growing number of older people increases the need for health care, and with it, the burden on the health system. The answers are preventive care, early diagnosis and efficient management of diagnostic data. Innovative medical technology can play a decisive role here, for example with new imaging techniques or more sensitive diagnostic

tools for the laboratories. The more specific the diagnosis, the more individually the patient can be treated. This has a positive effect on chances of recovery and treatment duration – and therefore also on costs.

Thus innovative medical technology benefits not only the patient but also the whole health system.

**Answers for life.**